

Date: 21-06-2019

To
The principal
P. B. Siddhartha College of Arts and Sciences
Mogalrajapuram
Vijayawada – 520 010

Handwritten signature and date: 21/6/19

Respected Sir

Sub: Submission of feedback analysis on curriculum (2018-19).

The feedback on curriculum of various programmes has been collected for academic year 2018-19. from the stake holders (i.e., Students, Alumini, employers and faculty members). We are here with submitting the analysis on feedback for your perusal and the same has been forwarded to the Heads of the departments for modifications in the curriculum.

Thanking You Sir

Yours sincerely


(Feedback Committee)

STUDENT FEEDBACK ON CURRICULUM 2018-2019

Question	N	Excellent	%	Very Good	%	Good	%	Average	%	Below Average	%	MRR
sequence of the courses that you have studied is in order to what you have studied in the previous semester	537	183	34%	201	37%	87	16%	46	9%	20	4%	3.90
syllabus of the courses that you have studied is in relation to the competencies expected out of the course	537	103	19%	261	49%	134	25%	26	5%	13	2%	3.77
relevance of the units in syllabus to the course	537	45	8%	231	43%	200	37%	51	9%	10	2%	3.47
allocation of the credits to the courses	537	40	7%	199	37%	184	34%	93	17%	21	4%	3.27
distribution of the contact hours among the course components (Lecture-Tutorial-Practice)	537	49	9%	168	31%	185	34%	76	14%	59	11%	3.13
electives/clusters offered in terms of their relevance to the specialization streams	537	40	7%	185	34%	185	34%	89	17%	38	7%	3.19
electives/ clusters offered in relation to the technological advancements.(Only for Out Going Students)	537	60	11%	194	36%	161	30%	83	15%	39	7%	3.28
rate the text books and reference books cited interns relevance by their international recognition to the courses	537	67	12%	193	36%	165	31%	74	14%	38	7%	3.33

the loading of the courses in a semester.	537	69	13%	190	35%	172	32%	86	16%	20	4%	3.38
the evaluation scheme designed for the course.	537	38	7%	203	38%	179	33%	83	15%	34	6%	3.24
Objectives stated for the course.	537	52	10%	185	34%	177	33%	83	15%	40	7%	3.23
percentage of courses having LAB components.	537	62	12%	190	35%	151	28%	97	18%	37	7%	3.27
experiments in relation to the real life Applications.	537	58	11%	192	36%	153	28%	78	15%	56	10%	3.22
rate the syllabus of your programme.	537	51	9%	198	37%	161	30%	72	13%	55	10%	3.22
employment orientation in the curriculum.	537	51	9%	185	34%	172	32%	85	16%	44	8%	3.21
Learning values (in terms of knowledge, concepts, manual skills, analytical abilities and broadening perspectives)	537	74	14%	158	29%	154	29%	78	15%	73	14%	3.15

Students Suggestions

applications related to industry
applications of retail programmes
Average
All good
Changing syllabus can provide the good knowledge to students
corporate course are highly suggest
For current environment of students are most like to get job in the field of computers so please provide the computer skills papers
give some preference to ncc also by providing their photos in banners
Good
Good...
hands on training
hostel facility
hostel for boys
Improve our canteen.
industrial visits
introduce marketing programmes
Introduce new programmes in application orientation
Real world..!! Depends on the experience of the teachers. So I want you to hire someone who has experience in the teaching field. Thank you.
required computer exposure
retail management programmes
Some of the teachers are way of teaching not well
there is less classes taken and no time for studying and understanding the syllabus , so please allocate some time for internals and sem and classes and exams .
Totally its good
Very good
Very Good
Waste
We have faced few issues with syllabus that was finalized 2 months later and the teachers run for the completion of syllabus is quite disappointing
we required computer papers for upskilling us

It would be better to have a Mini Projects for Each Semester/for Every Even Semester based on their Subjects(5th Unit can be about Project making). So that Students can develop their Research Skills and focus on Developing new things. Also, You can Conclude that wheather the Objectives of the Course is Fulfilled or Not.

It's nice college

My rating is good

Need exact fee structure for all courses In detail with first and second term fee Initially management asked to pay application fee, registration fee etc., In first year and they said that we have to pay only tution fee but now they are asking certain amount other than tution fee for each course hope you'll look into my suggestion

need particle expore

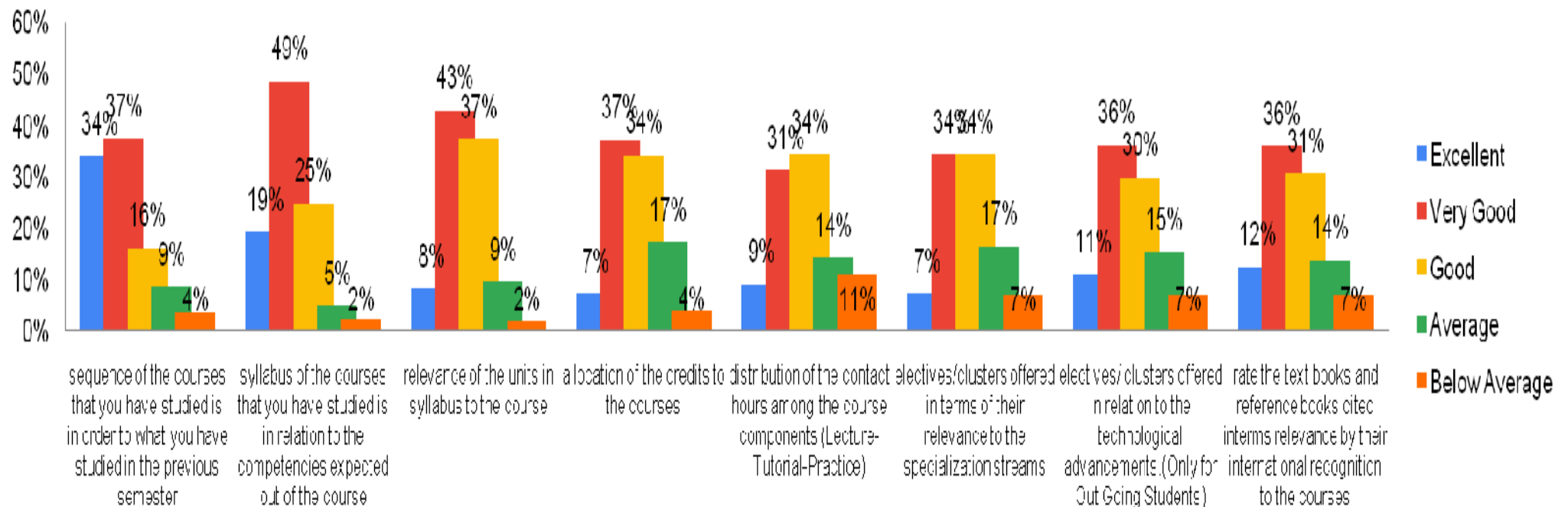
Please provide Some leager periods

Please Remove Papa Rao(PPR)

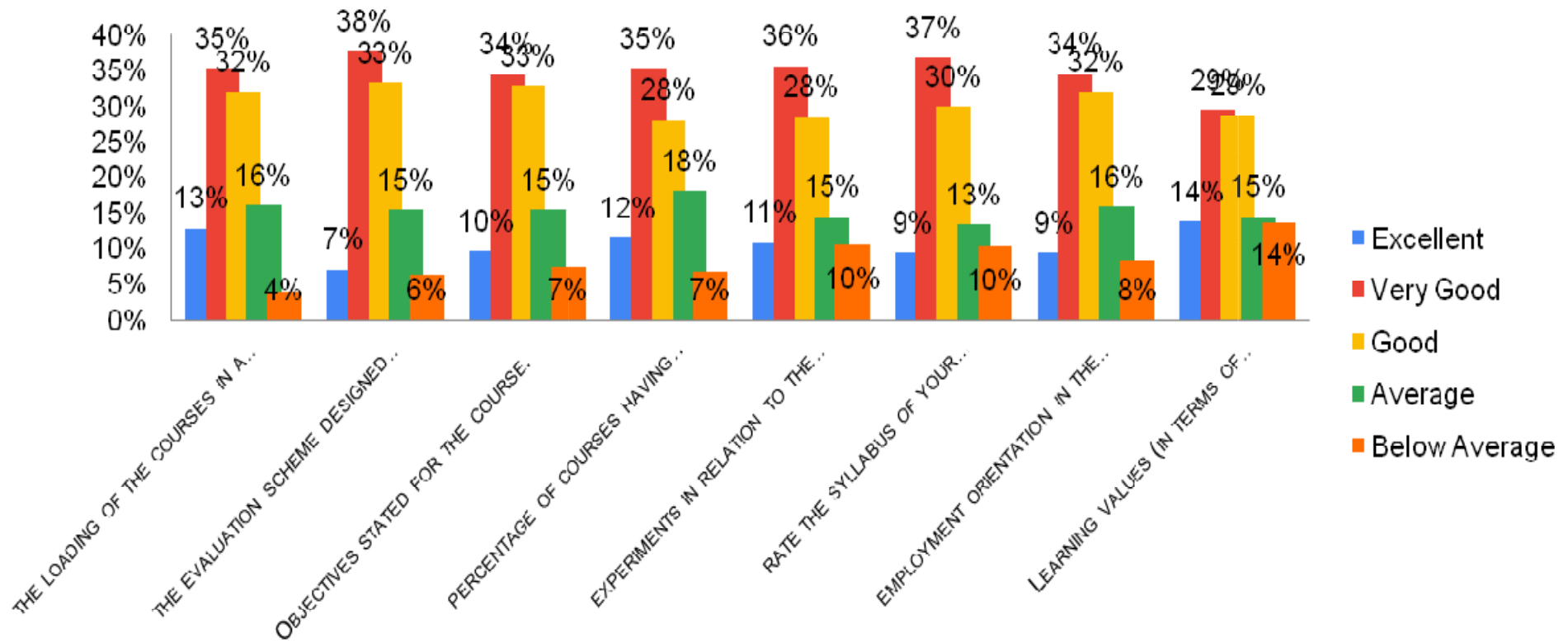
Proper class and lunch timeings for students and lectures

provide a very good knowledge in computers

STUDENT FEEDBACK ON CURRICULUM 2018-2019



STUDENT FEEDBACK ON CURRICULUM 2018-2019



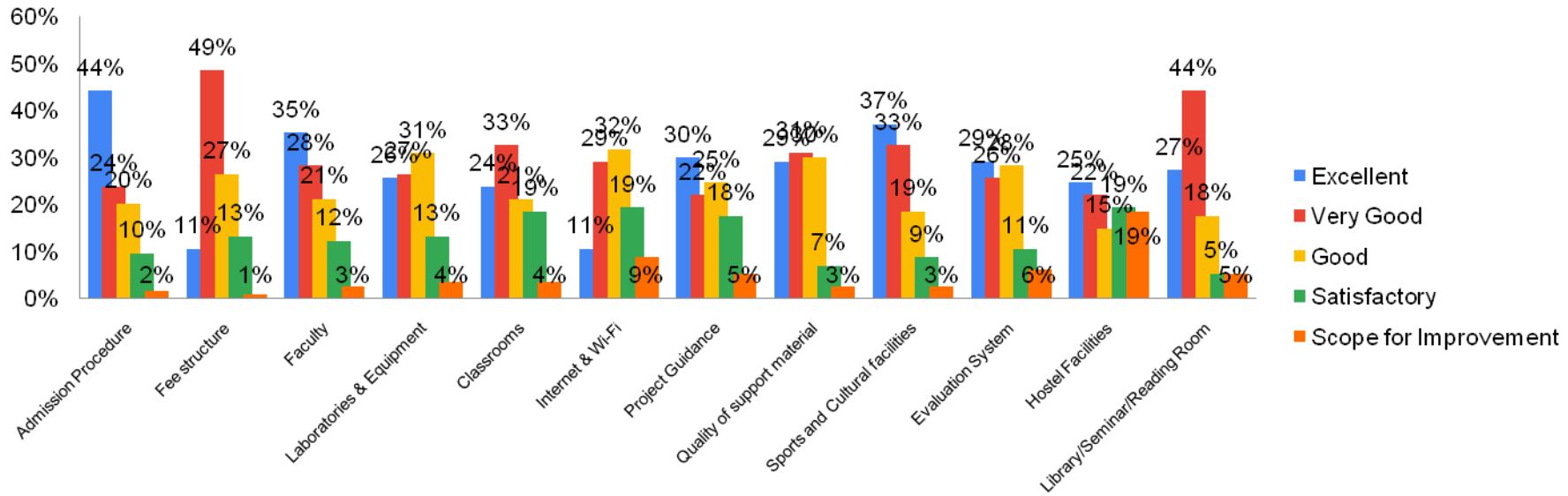
ALUMNI FEEDBACK ON CURRICULUM 2018-2019

Question	N	Excellent	%	Very Good	%	Good	%	Satisfactory	%	Scope for Improvement	%	MRR
Admission Procedure	113	50	44%	27	24%	23	20%	11	10%	2	2%	3.99
Fee structure	113	12	11%	55	49%	30	27%	15	13%	1	1%	3.55
Faculty	113	40	35%	32	28%	24	21%	14	12%	3	3%	3.81
Laboratories & Equipment	113	29	26%	30	27%	35	31%	15	13%	4	4%	3.58
Classrooms	113	27	24%	37	33%	24	21%	21	19%	4	4%	3.55
Internet & Wi-Fi	113	12	11%	33	29%	36	32%	22	19%	10	9%	3.13
Project Guidance	113	34	30%	25	22%	28	25%	20	18%	6	5%	3.54
Quality of support material	113	33	29%	35	31%	34	30%	8	7%	3	3%	3.77
Sports and Cultural facilities	113	42	37%	37	33%	21	19%	10	9%	3	3%	3.93
Evaluation System	113	33	29%	29	26%	32	28%	12	11%	7	6%	3.61
Hostel Facilities	113	28	25%	25	22%	17	15%	22	19%	21	19%	3.15
Library/Seminar/Reading Room	113	31	27%	50	44%	20	18%	6	5%	6	5%	3.83
How do you rate on campus Training & Placement opportunities provided to you?	113	34	30%	37	33%	23	20%	13	12%	6	5%	3.71

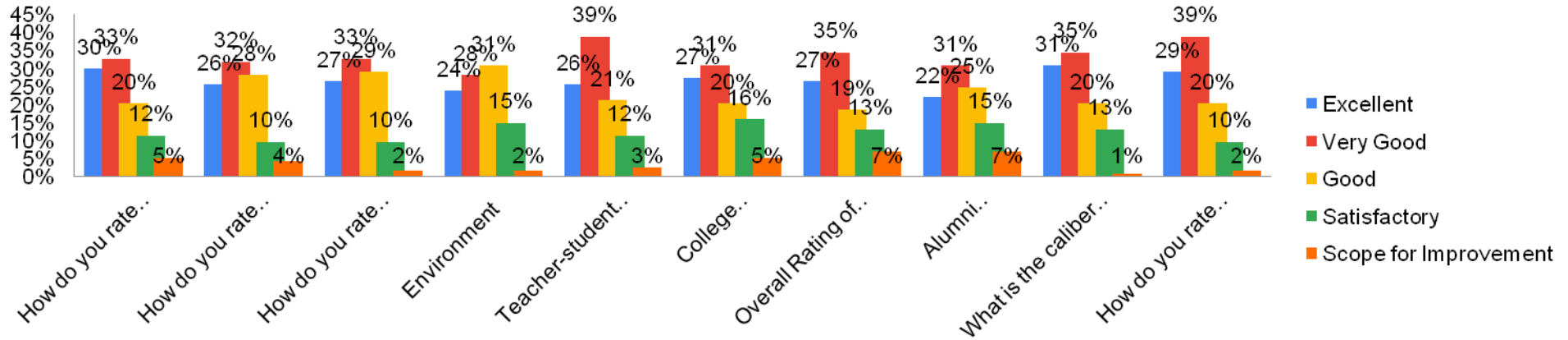
How do you rate off campus Training& Placement opportunities provided to you?	113	29	26%	36	32%	32	28%	11	10%	5	4%	3.65
How do you rate career counseling and guidance for higher studies from T&P Cell?	113	30	27%	37	33%	33	29%	11	10%	2	2%	3.73
Environment	113	27	24%	32	28%	35	31%	17	15%	2	2%	3.58
Teacher-student relationship	113	29	26%	44	39%	24	21%	13	12%	3	3%	3.73
College Administration	113	31	27%	35	31%	23	20%	18	16%	6	5%	3.59
Overall Rating of the College	113	30	27%	39	35%	21	19%	15	13%	8	7%	3.60
Alumni Association/Network of Old Friends	113	25	22%	35	31%	28	25%	17	15%	8	7%	3.46
What is the caliber of students passing out of this college	113	35	31%	39	35%	23	20%	15	13%	1	1%	3.81
How do you rate the courses that you have learnt suiting the requirements of the Industry ?	113	33	29%	44	39%	23	20%	11	10%	2	2%	3.84
How do you rate the learning experience in terms of their relevance to the real life application?	113	40	35%	42	37%	18	16%	11	10%	2	2%	3.95

How do you rate the courses that you have learnt in relation to your current job.	113	25	22%	37	33%	32	28%	16	14%	3	3%	3.58
How do you rate the way your(As a student) grievances were handled at the Department/college ?	113	33	29%	41	36%	21	19%	17	15%	1	1%	3.78
How do you rate the way your(As a Alumni) grievances were handled at the Department/college ?	113	18	16%	49	43%	30	27%	13	12%	3	3%	3.58
Rate the following academic initiatives taken by the Department / College	113	33	29%	33	29%	26	23%	17	15%	4	4%	3.65
Industry Oriented Projects (if applicable)	113	19	17%	42	37%	29	26%	15	13%	8	7%	3.43
Seminars & Workshop	113	32	28%	34	30%	29	26%	9	8%	9	8%	3.63
Guest Lectures	113	28	25%	33	29%	38	34%	7	6%	7	6%	3.60
Special Training Classes for bridging	113	28	25%	37	33%	24	21%	15	13%	9	8%	3.53
Industry Academia Interaction	113	30	27%	33	29%	31	27%	16	14%	3	3%	3.63

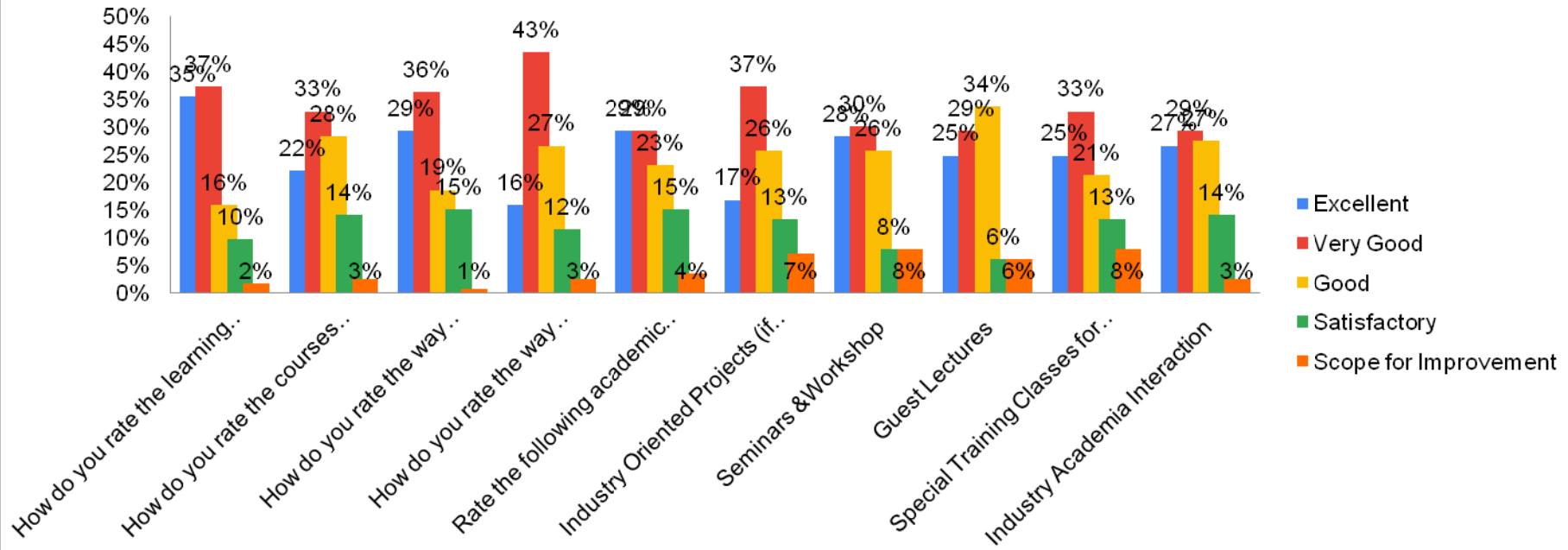
ALUMNI FEEDBACK ON CURRICULUM 2018-2019



ALUMNI FEEDBACK ON CURRICULUM 2018-2019



ALUMNI FEEDBACK ON CURRICULUM 2018-2019



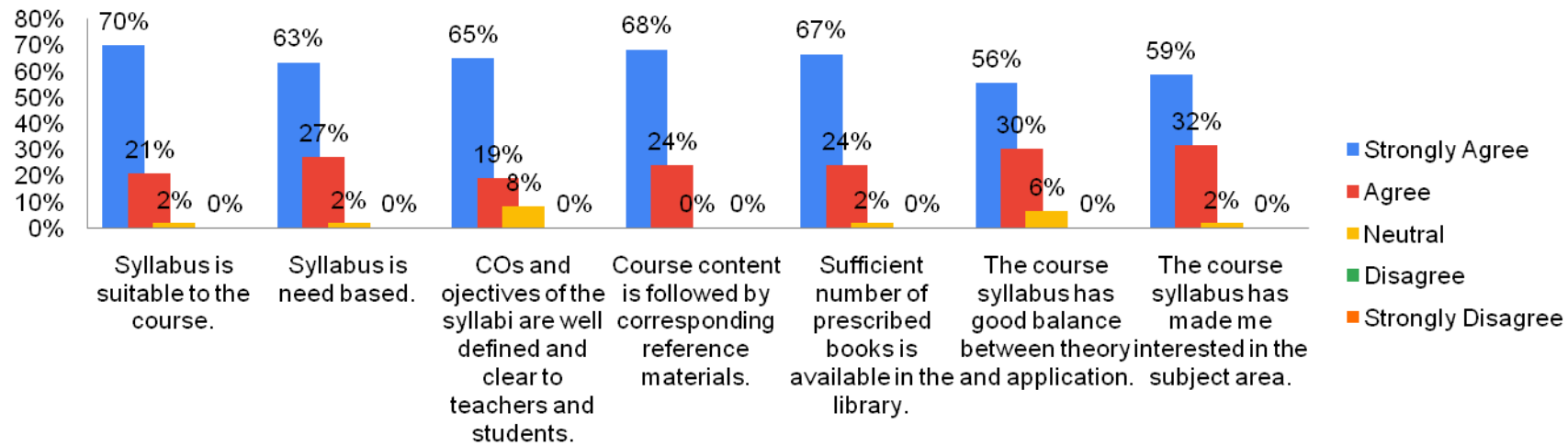
FACULTY FEEDBACK ON CURRICULUM 2018-2019

Question	N	Strongly Agree	%	Agree	%	Neutral	%	Disagree	%	Strongly Disagree	%	MRR
Syllabus is suitable to the course.	58	44	70%	13	21%	1	2%	0	0%	0	0%	4.74
Syllabus is need based.	58	40	63%	17	27%	1	2%	0	0%	0	0%	4.67
COs and ojectives of the syllabi are well defined and clear to teachers and students.	58	41	65%	12	19%	5	8%	0	0%	0	0%	4.62
Course content is followed by corresponding reference materials.	58	43	68%	15	24%	0	0%	0	0%	0	0%	4.74
Sufficient number of prescribed books is available in the library.	58	42	67%	15	24%	1	2%	0	0%	0	0%	4.71
The course syllabus has good balance between theory and application.	58	35	56%	19	30%	4	6%	0	0%	0	0%	4.53
The course syllabus has made me interested in the subject area.	58	37	59%	20	32%	1	2%	0	0%	0	0%	4.62
The course syllabus of this subject increased my knowledge and perspective in the subject area.	58	41	65%	17	27%	0	0%	0	0%	0	0%	4.71
The books prescribed/listed as reference materials are relevant, updated and appropriate.	58	36	57%	22	35%	0	0%	0	0%	0	0%	4.62

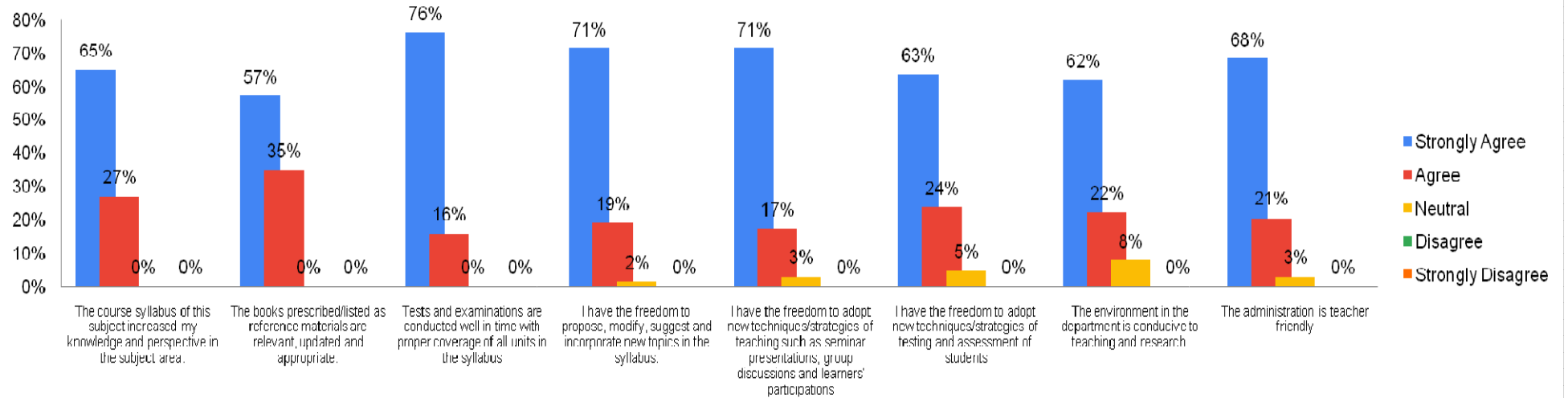
Tests and examinations are conducted well in time with proper coverage of all units in the syllabus	58	48	76%	10	16%	0	0%	0	0%	0	0%	4.83
I have the freedom to propose, modify, suggest and incorporate new topics in the syllabus.	58	45	71%	12	19%	1	2%	0	0%	0	0%	4.76
I have the freedom to adopt new techniques/strategies of teaching such as seminar presentations, group discussions and learners' participations	58	45	71%	11	17%	2	3%	0	0%	0	0%	4.74
I have the freedom to adopt new techniques/strategies of testing and assessment of students	58	40	63%	15	24%	3	5%	0	0%	0	0%	4.64
The environment in the department is conducive to teaching and research.	58	39	62%	14	22%	5	8%	0	0%	0	0%	4.59
The administration is teacher friendly	58	43	68%	13	21%	2	3%	0	0%	0	0%	4.71
The Colleges provides adequate and smooth support for projects and research facilities.	58	37	59%	17	27%	4	6%	0	0%	0	0%	4.57
The College provides adequate funding and support to faculty members for upgrading their skills and qualifications.	58	38	60%	18	29%	2	3%	0	0%	0	0%	4.62
Provisions for professional development are non-discriminatory and fair.	58	35	56%	21	33%	2	3%	0	0%	0	0%	4.57

Infrastructural facilities, such as teacher's rooms/carrels, class rooms, reading rooms and toilets are available in the Department.	58	41	65%	14	22%	3	5%	0	0%	0	0%	4.66
Students have achieved outcomes from the course.	58	37	59%	18	29%	3	5%	0	0%	0	0%	4.59
Evaluation system in the College is transparent	58	45	71%	12	19%	1	2%	0	0%	0	0%	4.76
College activities helped your students in getting jobs and placements	58	40	63%	16	25%	2	3%	0	0%	0	0%	4.66
My students are transformed after the completion of the course	58	39	62%	18	29%	1	2%	0	0%	0	0%	4.66

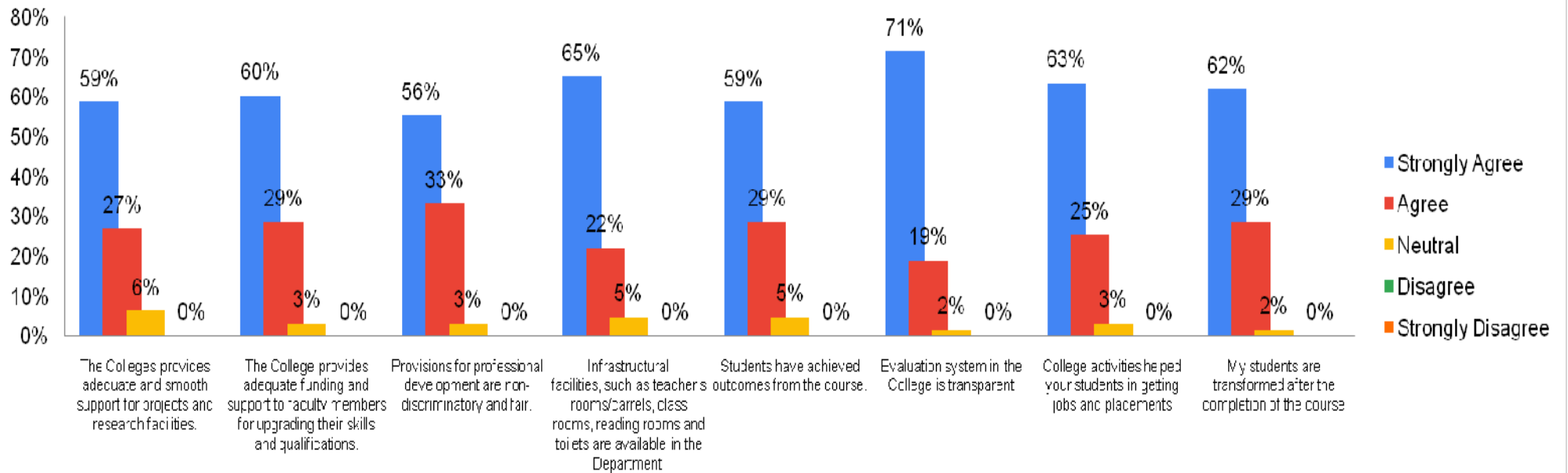
FACULTY FEEDBACK ON CURRICULUM 2018-2019



FACULTY FEEDBACK ON CURRICULUM 2018-2019



FACULTY FEEDBACK ON CURRICULUM 2018-2019



EMPLOYER FEEDBACK ON CURRICULUM 2018-19

Question	N	Excellent	%	Very Good	%	Good	%	Satisfactory	%	Scope for Improvement	%	MRR
Subject knowledge imparted by curriculum	10	5	50%	2	20%	3	30%	0	0%	0	0%	4.20
Competency level due to curriculum	10	4	40%	1	10%	4	40%	1	10%	0	0%	3.80
Adequacy of skill acquired through curriculum	10	3	30%	2	20%	2	20%	3	30%	0	0%	3.50
Job Fit with curriculum	10	3	30%	4	40%	1	10%	2	20%	0	0%	3.80
Adequacy of curriculum	10	2	20%	4	40%	3	30%	1	10%	0	0%	3.70
Target Orientation with Curriculum	10	3	30%	2	20%	2	20%	3	30%	0	0%	3.50
Quest for new learning with curriculum	10	5	50%	2	20%	3	30%	0	0%	0	0%	4.20
Ability to relate theory to practice in curriculum	10	5	50%	0	0%	5	50%	0	0%	0	0%	4.00
Group Dynamics with curriculum	10	5	50%	1	10%	1	10%	3	30%	0	0%	3.80
Communication and Attitude change with curriculum	10	5	50%	3	30%	1	10%	1	10%	0	0%	4.20
Overall rating	10	4	40%	2	20%	4	40%	0	0%	0	0%	4.00

EMPLOYER FEEDBACK ON CURRICULUM 2018-2019

