

Date: 24-06-2020

To
The principal
P. B. Siddhartha College of Arts and Sciences
Mogalrajapuram
Vijayawada – 520 010



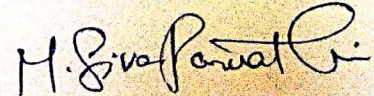
Respected Sir

Sub: submission of feedback analysis on curriculum (2019-20).

The feedback on curriculum of various programmes has been collected for academic year 2019-20. from the stake holders (i.e., Students, Alumini, employers and faculty members). We are here with submitting the analysis on feedback for your perusal the same has been forwarded to the heads of the departments for modifications in the curriculum.

Thanking You Sir

Yours sincerely

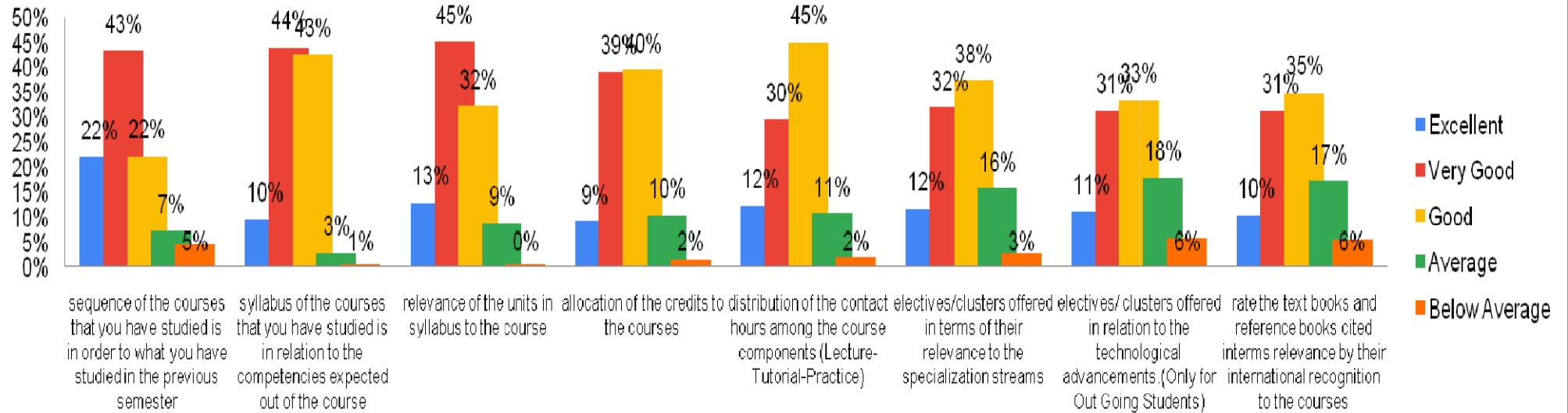

(Feedback Committee)

STUDENT FEEDBACK ON CURRICULUM 2019-2020

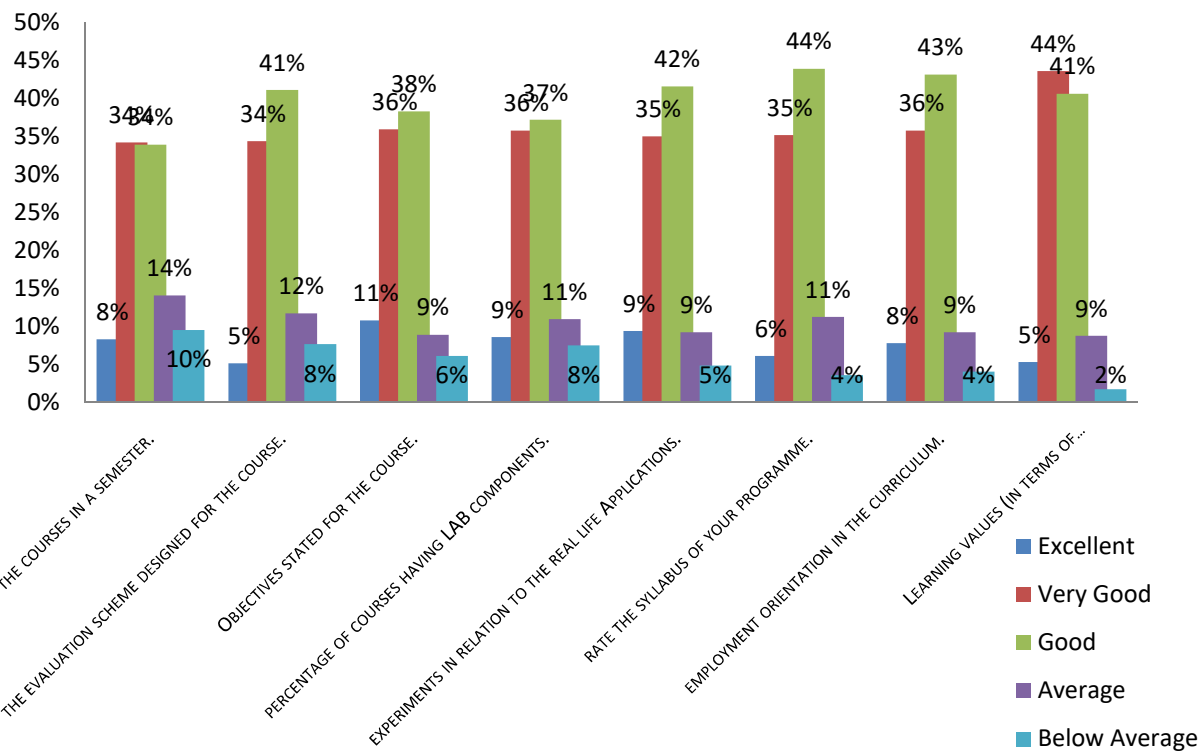
Question	N	Excellent	%	Very Good	%	Good	%	Average	%	Below Average	%	MRR
sequence of the courses that you have studied is in order to what you have studied in the previous semester	640	142	22%	278	43%	143	22%	47	7%	30	5%	3.71
syllabus of the courses that you have studied is in relation to the competencies expected out of the course	640	62	10%	282	44%	273	43%	19	3%	4	1%	3.59
relevance of the units in syllabus to the course	640	83	13%	290	45%	207	32%	57	9%	3	0%	3.61
allocation of the credits to the courses	640	59	9%	251	39%	253	40%	67	10%	10	2%	3.44
distribution of the contact hours among the course components (Lecture-Tutorial-Practice)	640	79	12%	190	30%	289	45%	69	11%	13	2%	3.40
electives/clusters offered in terms of their relevance to the specialization streams	640	75	12%	205	32%	240	38%	101	16%	19	3%	3.34
electives/ clusters offered in relation to the technological advancements.(Only for Out Going Students)	640	72	11%	201	31%	214	33%	115	18%	38	6%	3.24
rate the text books and reference books cited interns relevance by their international recognition to the courses	640	67	10%	201	31%	224	35%	111	17%	37	6%	3.23

the loading of the courses in a semester.	640	53	8%	219	34%	217	34%	90	14%	61	10%	3.18
the evaluation scheme designed for the course.	640	33	5%	220	34%	263	41%	75	12%	49	8%	3.18
Objectives stated for the course.	640	69	11%	230	36%	245	38%	57	9%	39	6%	3.36
percentage of courses having LAB components.	640	55	9%	229	36%	238	37%	70	11%	48	8%	3.27
experiments in relation to the real life Applications.	640	60	9%	224	35%	266	42%	59	9%	31	5%	3.35
rate the syllabus of your programme.	640	39	6%	225	35%	281	44%	72	11%	23	4%	3.29
employment orientation in the curriculum.	640	50	8%	229	36%	276	43%	59	9%	26	4%	3.34
Learning values (in terms of knowledge, concepts, manual skills, analytical abilities and broadening perspectives)	640	34	5%	279	44%	260	41%	56	9%	11	2%	3.42

STUDENT FEEDBACK ON CURRICULUM 2019-2020



STUDENT FEEDBACK ON CURRICULUM 2019-2020



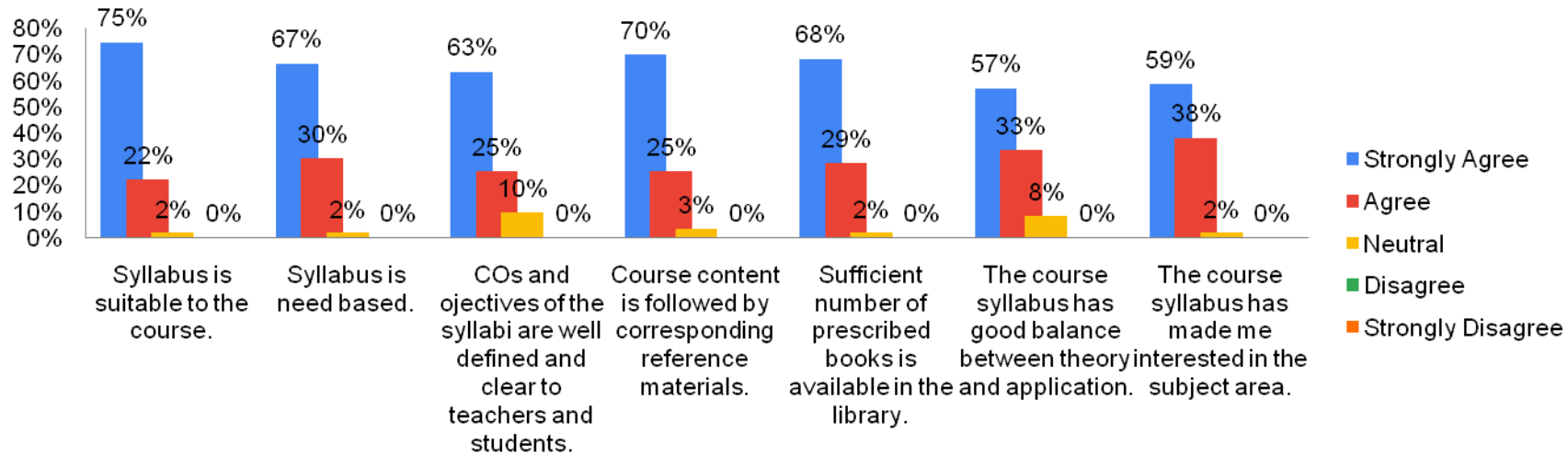
FACULTY FEEDBACK ON CURRICULUM 2019-2020

Question	N	Strongly Agree	%	Agree	%	Neutral	%	Disagree	%	Strongly Disagree	%	MRR
Syllabus is suitable to the course.	62	47	75%	14	22%	1	2%	0	0%	0	0%	4.74
Syllabus is need based.	62	42	67%	19	30%	1	2%	0	0%	0	0%	4.66
COs and ojectives of the syllabi are well defined and clear to teachers and students.	62	40	63%	16	25%	6	10%	0	0%	0	0%	4.55
Course content is followed by corresponding reference materials.	62	44	70%	16	25%	2	3%	0	0%	0	0%	4.68
Sufficient number of prescribed books is available in the library.	62	43	68%	18	29%	1	2%	0	0%	0	0%	4.68
The course syllabus has good balance between theory and application.	62	36	57%	21	33%	5	8%	0	0%	0	0%	4.50
The course syllabus has made me interested in the subject area.	62	37	59%	24	38%	1	2%	0	0%	0	0%	4.58
The course syllabus of this subject increased my knowledge and perspective in the subject area.	62	43	68%	19	30%	0	0%	0	0%	0	0%	4.69
The books prescribed/listed as reference materials are relevant, updated and appropriate.	62	37	59%	24	38%	1	2%	0	0%	0	0%	4.58

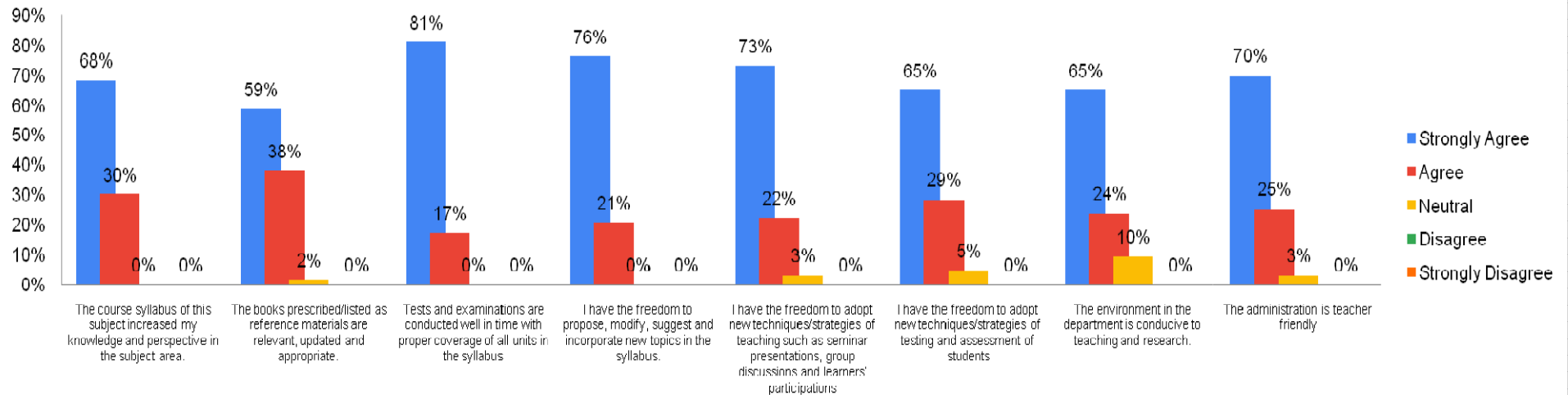
Tests and examinations are conducted well in time with proper coverage of all units in the syllabus	62	51	81%	11	17%	0	0%	0	0%	0	0%	4.82
I have the freedom to propose, modify, suggest and incorporate new topics in the syllabus.	62	48	76%	13	21%	0	0%	0	0%	0	0%	4.71
I have the freedom to adopt new techniques/strategies of teaching such as seminar presentations, group discussions and learners' participations	62	46	73%	14	22%	2	3%	0	0%	0	0%	4.71
I have the freedom to adopt new techniques/strategies of testing and assessment of students	62	41	65%	18	29%	3	5%	0	0%	0	0%	4.61
The environment in the department is conducive to teaching and research.	62	41	65%	15	24%	6	10%	0	0%	0	0%	4.56
The administration is teacher friendly	62	44	70%	16	25%	2	3%	0	0%	0	0%	4.68
The Colleges provides adequate and smooth support for projects and research facilities.	62	39	62%	19	30%	4	6%	0	0%	0	0%	4.56
The College provides adequate funding and support to faculty members for upgrading their skills and qualifications.	62	39	62%	21	33%	2	3%	0	0%	0	0%	4.60
Provisions for professional development are non-discriminatory and fair.	62	36	57%	23	37%	3	5%	0	0%	0	0%	4.53

Infrastructural facilities, such as teacher's rooms/carrels, class rooms, reading rooms and toilets are available in the Department.	62	43	68%	15	24%	4	6%	0	0%	0	0%	4.63
Students have achieved outcomes from the course.	62	39	62%	20	32%	3	5%	0	0%	0	0%	4.58
Evaluation system in the College is transparent	62	46	73%	15	24%	1	2%	0	0%	0	0%	4.73
College activities helped your students in getting jobs and placements	62	40	63%	19	30%	3	5%	0	0%	0	0%	4.60
My students are transformed after the completion of the course	62	41	65%	20	32%	1	2%	0	0%	0	0%	4.65

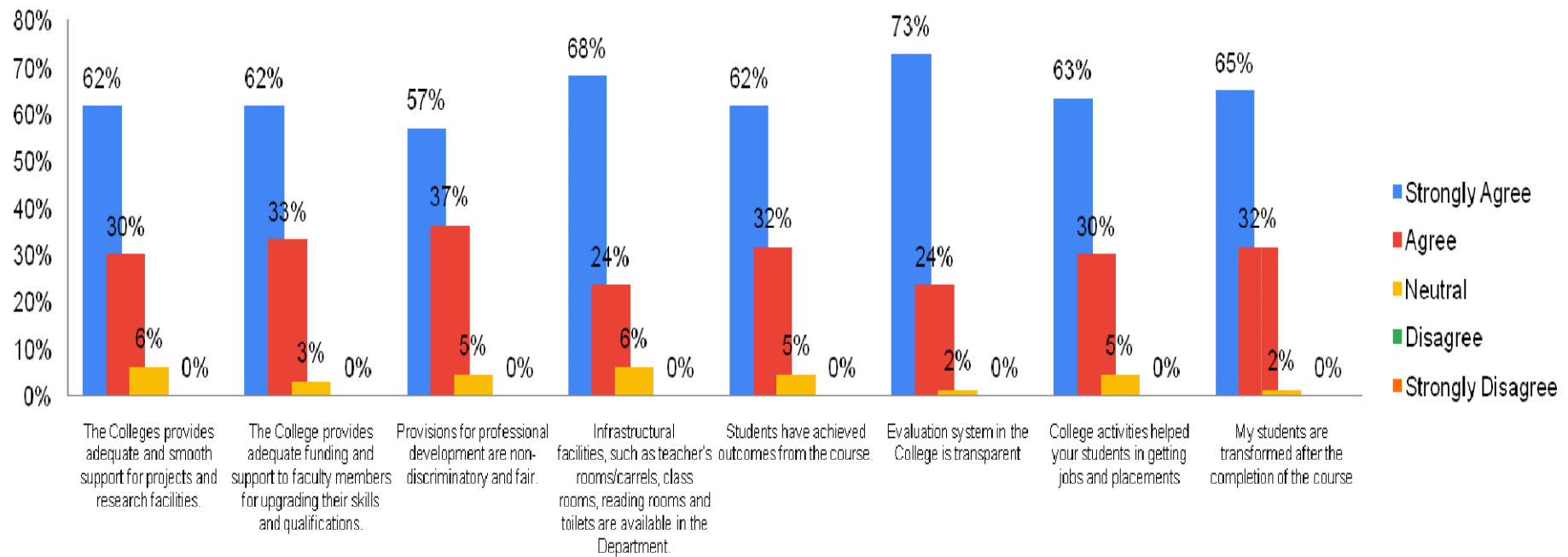
FACULTY FEEDBACK ON CURRICULUM 2019-20



FACULTY FEEDBACK ON CURRICULUM 2019-2020



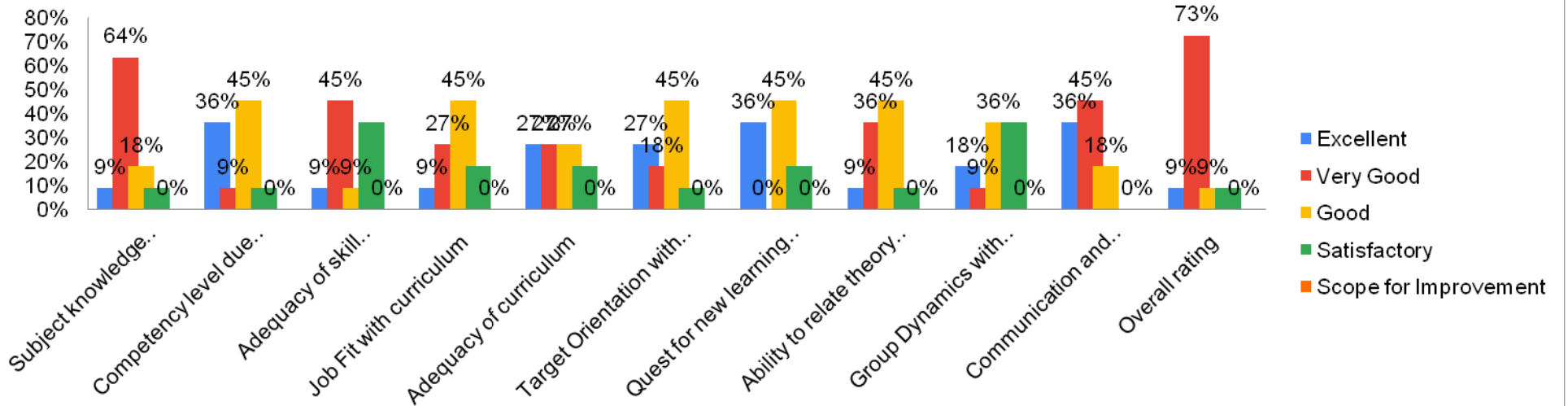
FACULTY FEEDBACK ON CURRICULUM 2019-2020



EMPLOYER FEEDBACK ON CURRICULUM 2019-2020

Question	N	Excellent	%	Very Good	%	Good	%	Satisfactory	%	Scope for Improvement	%	MRR
Subject knowledge imparted by curriculum	11	1	9%	7	64%	2	18%	1	9%	0	0%	3.73
Competency level due to curriculum	11	4	36%	1	9%	5	45%	1	9%	0	0%	3.73
Adequacy of skill acquired through curriculum	11	1	9%	5	45%	1	9%	4	36%	0	0%	3.27
Job Fit with curriculum	11	1	9%	3	27%	5	45%	2	18%	0	0%	3.27
Adequacy of curriculum	11	3	27%	3	27%	3	27%	2	18%	0	0%	3.64
Target Orientation with Curriculum	11	3	27%	2	18%	5	45%	1	9%	0	0%	3.64
Quest for new learning with curriculum	11	4	36%	0	0%	5	45%	2	18%	0	0%	3.55
Ability to relate theory to practice in curriculum	11	1	9%	4	36%	5	45%	1	9%	0	0%	3.45
Group Dynamics with curriculum	11	2	18%	1	9%	4	36%	4	36%	0	0%	3.09
Communication and Attitude change with curriculum	11	4	36%	5	45%	2	18%	0	0%	0	0%	4.18
Overall rating	11	1	9%	8	73%	1	9%	1	9%	0	0%	3.82

EMPLOYER FEEDBACK ON CURRICULUM 2019-2020



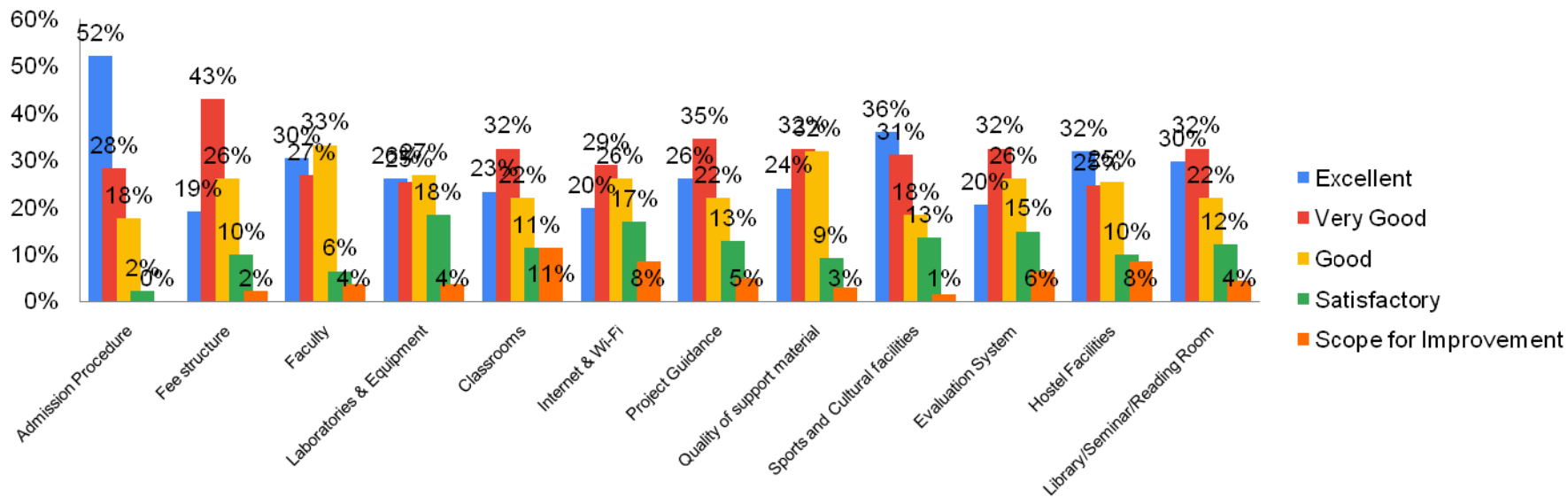
ALUMNI FEEDBACK ON CURRICULUM 2019-2020

Question	N	Excellent	%	Very Good	%	Good	%	Satisfactory	%	Scope for Improvement	%	MRR
Admission Procedure	142	74	52%	40	28%	25	18%	3	2%	0	0%	4.30
Fee structure	142	27	19%	61	43%	37	26%	14	10%	3	2%	3.67
Faculty	142	43	30%	38	27%	47	33%	9	6%	5	4%	3.74
Laboratories & Equipment	142	37	26%	36	25%	38	27%	26	18%	5	4%	3.52
Classrooms	142	33	23%	46	32%	31	22%	16	11%	16	11%	3.45
Internet & Wi-Fi	142	28	20%	41	29%	37	26%	24	17%	12	8%	3.35
Project Guidance	142	37	26%	49	35%	31	22%	18	13%	7	5%	3.64
Quality of support material	142	34	24%	46	32%	45	32%	13	9%	4	3%	3.65
Sports and Cultural facilities	142	51	36%	44	31%	26	18%	19	13%	2	1%	3.87
Evaluation System	142	29	20%	46	32%	37	26%	21	15%	9	6%	3.46
Hostel Facilities	142	45	32%	35	25%	36	25%	14	10%	12	8%	3.61
Library/Seminar/Reading Room	142	42	30%	46	32%	31	22%	17	12%	6	4%	3.71
How do you rate on campus Training & Placement opportunities provided to you?	142	38	27%	54	38%	33	23%	13	9%	4	3%	3.77

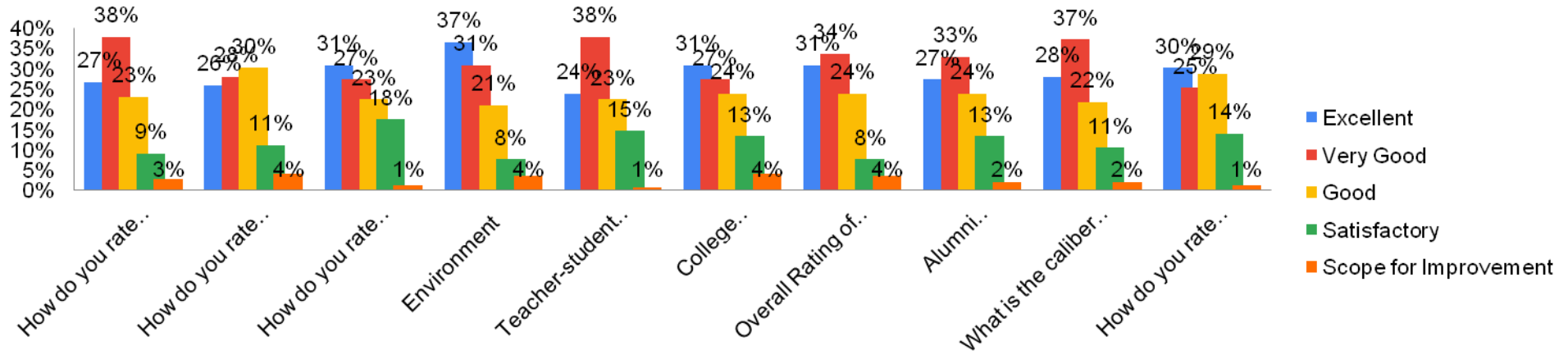
How do you rate off campus Training& Placement opportunities provided to you?	142	37	26%	40	28%	43	30%	16	11%	6	4%	3.61
How do you rate career counseling and guidance for higher studies from T&P Cell?	142	44	31%	39	27%	32	23%	25	18%	2	1%	3.69
Environment	142	52	37%	44	31%	30	21%	11	8%	5	4%	3.89
Teacher-student relationship	142	34	24%	54	38%	32	23%	21	15%	1	1%	3.70
College Administration	142	44	31%	39	27%	34	24%	19	13%	6	4%	3.68
Overall Rating of the College	142	44	31%	48	34%	34	24%	11	8%	5	4%	3.81
Alumni Association/Network of Old Friends	142	39	27%	47	33%	34	24%	19	13%	3	2%	3.70
What is the caliber of students passing out of this college	142	40	28%	53	37%	31	22%	15	11%	3	2%	3.79
How do you rate the courses that you have learnt suiting the requirements of the Industry ?	142	43	30%	36	25%	41	29%	20	14%	2	1%	3.69
How do you rate the learning experience in terms of their relevance to the real life application?	142	63	44%	53	37%	14	10%	8	6%	4	3%	4.15

How do you rate the courses that you have learnt in relation to your current job.	142	31	22%	64	45%	40	28%	5	4%	2	1%	3.82
How do you rate the way your(As a student) grievances were handled at the Department/college ?	142	35	25%	37	26%	60	42%	9	6%	1	1%	3.68
How do you rate the way your(As a Alumni) grievances were handled at the Department/college ?	142	34	24%	44	31%	31	22%	30	21%	3	2%	3.54
Rate the following academic initiatives taken by the Department / College	142	30	21%	51	36%	35	25%	17	12%	9	6%	3.54
Industry Oriented Projects (if applicable)	142	38	27%	50	35%	26	18%	16	11%	12	8%	3.61
Seminars & Workshop	142	35	25%	53	37%	30	21%	18	13%	6	4%	3.65
Guest Lectures	142	41	29%	57	40%	28	20%	13	9%	3	2%	3.85
Special Training Classes for bridging	142	26	18%	48	34%	49	35%	14	10%	5	4%	3.54
Industry Academia Interaction	142	31	22%	45	32%	29	20%	24	17%	13	9%	3.40

ALUMNI FEEDBACK ON CURRICULUM 2019-20



ALUMNI FEEDBACK ON CURRICULUM 2019-20



ALUMNI FEEDBACK ON CURRICULUM 2019-20

